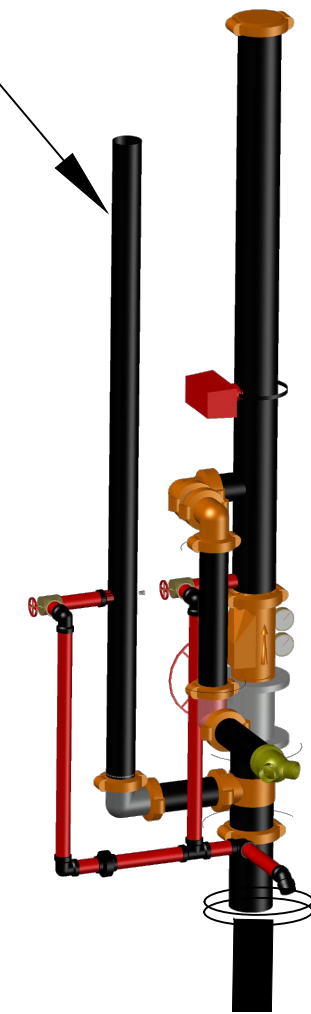


NEW 2-1/2" SUPPLY
TO BLDGS.
2,3,4

(E) RISER FOR (E)
RESTAURANT



(E) RISER
MANIFOLD
NEW SUPPLY CONNECTION FOR
BLDG. 2 AND BLDGS. 3+4.

(E) 6" UG.
TO REMAIN AS-IS



(E) FDC

N.I.C

(E) RESTAURANT SYSTEM

BUILDING 1
(SPRINKLERED)

Source Information

Date of Flow Test / Info : 6-26-24
Location of flow test data :
2425 S 24TH ST
Source of flow test data :
C.O.P.

Source Data Points	Pump Data Points		
Pressure	Flow	Pressure	Flow
60.00	0.00		
49.00	2541.00		

MAXIMUM DISTANCE BETWEEN HANGERS												
NOMINAL PIPE SIZE (in.)	3/4"	1"	1 1/4"	1 1/2"	2"	2 1/2"	3"	3 1/2"	4"	5"	6"	8"
STEEL PIPE EXCEPT THREADED LIGHTWALL	N/A	12-0	12-0	15-0	15-0	15-0	15-0	15-0	15-0	15-0	15-0	15-0
THREADED LIGHTWALL STEEL PIPE	N/A	12-0	12-0	12-0	12-0	12-0	12-0	N/A	N/A	N/A	N/A	N/A
COPPER TUBE	8-0	8-0	10-0	10-0	12-0	12-0	12-0	15-0	15-0	15-0	15-0	15-0
CPVC	5-6	6-0	6-0	7-0	8-0	9-0	12-0	N/A	N/A	N/A	N/A	N/A

BUILDING 4

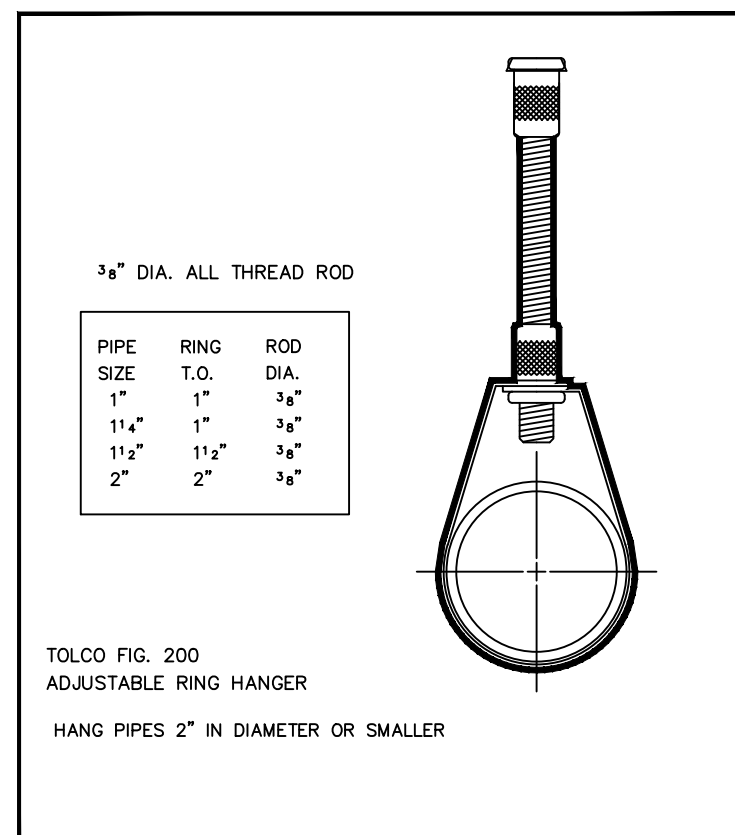
BUILDING 3

BUILDING 2



FIRE SPRINKLER OVERALL PIPING PLAN

SCALE: NONE



HANGER DETAIL

NEW FIRE SPRINKLER SYSTEM FOR COMMUNITY BRIDGES-RIO FRESCO

2425 S. 24TH ST.

PHOENIX, AZ.

CONTACT INFORMATION:

OWNER:
SOUTH 24TH / LLC.
17211 BLACK CANYON HIGHWAY
PHOENIX, AZ. 85023

ARCHITECT:
TIM R. NIELSEN
4447 E. BROADWAY RD., SUITE 109
MESA, AZ. 85206

FIRE PROTECTION
METRO FIRE + SECURITY
ADDRESS: 63 S. HAMILTON PL.
CITY: GILBERT, AZ. 85233
CONTACT: JOHNNY DAVILA
PHONE # (480) 431-0674

SCOPE OF WORK / DESIGN INFORMATION

DESIGN AND INSTALL A NEW, WET TYPE FIRE SPRINKLER SYSTEM
AT EXISTING BUILDINGS, #2, #3, AND #4.

DESIGN AND INSTALLATION PER NFPA-13R , 2019 ED., AND THE CITY
OF PHOENIX FIRE DEPARTMENT REQUIREMENTS.

PROJECT INFORMATION:

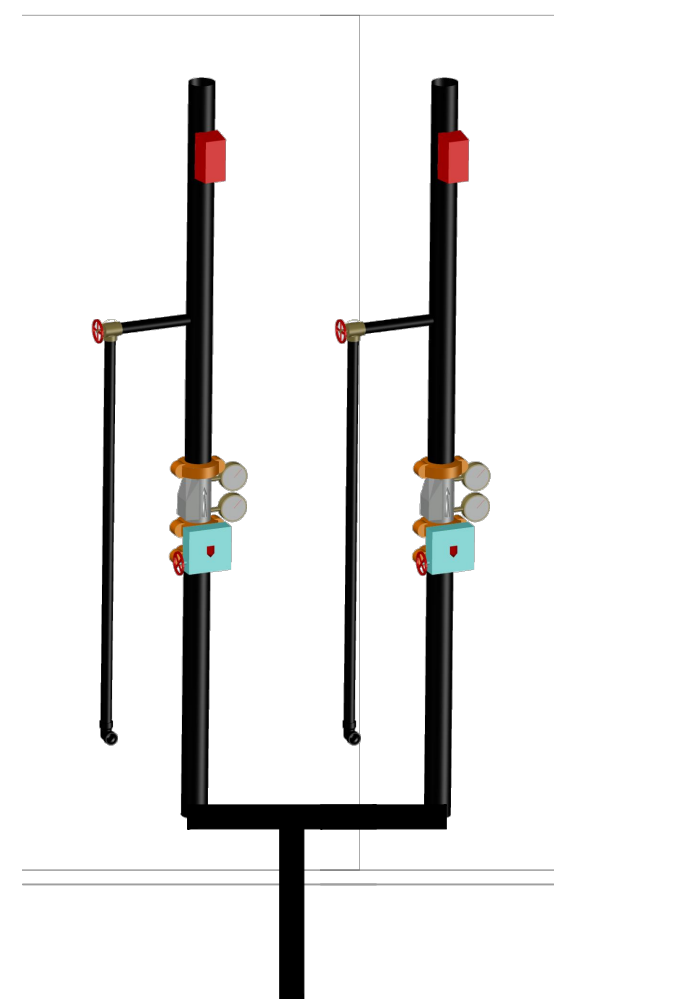
OCCUPANCY TYPE: RESIDENTIAL(R-2)
CONSTRUCTION TYPE: II-B
SCOPE OF WORK AREA:
BLDG. 2 = +/- 28,580 SF.
BLDG. 3 = +/- 22,124 SF.
BLDG. 4 = +/- 6,378 SF.

APPLICABLE CODES: (AS AMENDED BY LOCAL AHJ)

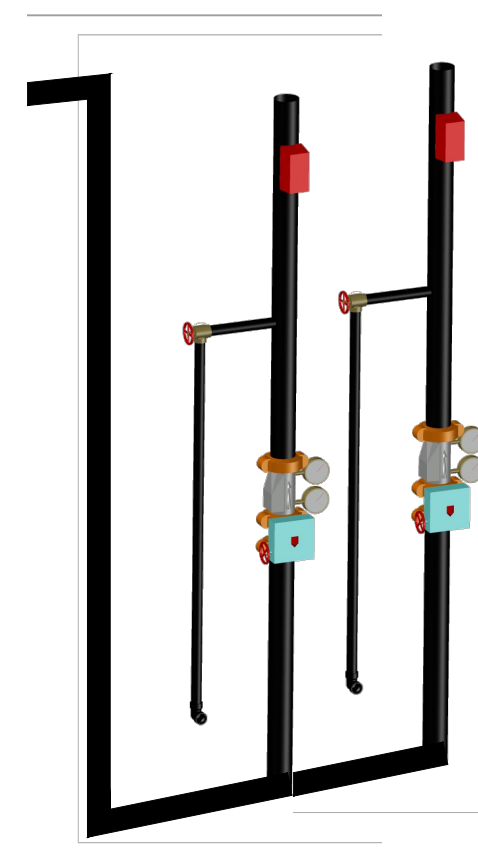
IBC 2018 ED
IFC 2018 ED (WITH C.O.P. AMMENDMENTS)

GENERAL NOTES

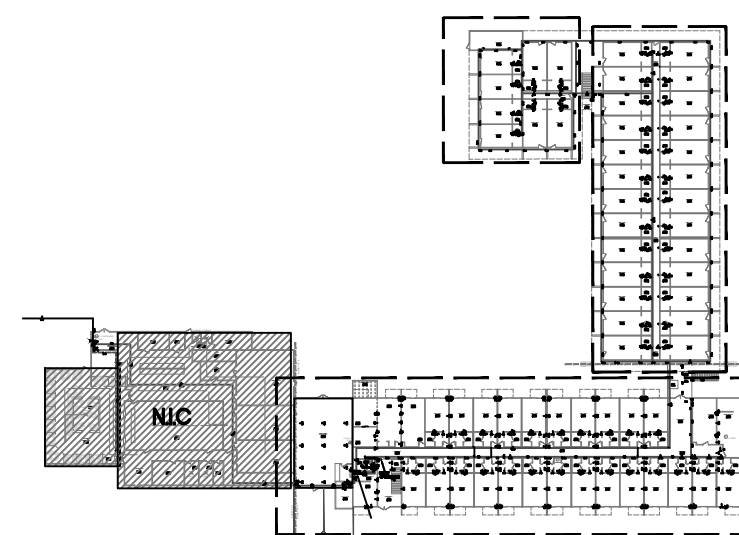
- ALL DESIGN, MATERIALS AND INSTALLATION OF THIS SYSTEM SHALL BE INSTALLED PER NFPA 13 AND LOCAL REQUIREMENTS.
- ONLY NEW SPRINKLERS SHALL BE INSTALLED
- ALL SPRINKLER SHALL SYSTEM SHALL BE HYDROSTATICALLY TESTED AT 200 OR AT 50 PSI ABOVE THE OPERATIONAL STATIC PRESSURE OF THE SYSTEM. WHICH EVER IS GRATER FOR TWO HOURS
- STOCK OF SPARE SPRINKLERS SHALL INCLUDE ALL TYPES AND RATINGS INSTALLED AND SHALL BE AS FOLLOWS:
 - FOR PROTECTED FACILITIES HAVING UNDER 300 SPRINKLERS—NO FEWER THAN SIX SPRINKLERS
 - FOR PROTECTED FACILITIES HAVING 300 TO 1000 SPRINKLERS — NO FEWER THAN 12 SPRINKLERS
 - FOR PROTECTED FACILITIES HAVING OVER 1000 SPRINKLERS — NO FEWER THAN 24 SPRINKLERS
- ONE SPRINKLER WRENCH AS SPECIFIED BY THE SPRINKLER MANUFACTURER SHALL BE PROVIDED IN THE CABINET FOR EACH TYPE OF SPRINKLER INSTALLED TO BE USED FOR THE REMOVAL AND INSTALLATION OF SPRINKLERS IN THE SYSTEM. SHALL BE LOCATED NEAR THE FIRE RISER WHERE THE TEMPERATURE TO WHICH THEY ARE SUBJECT WILL NOT EXCEED 100°F.
- ALL PRODUCTS SHALL BE UL LISTED OR FM APPROVED FOR FIRE SPRINKLER USE.
- ALL NEW SPRINKLER STEEL PIPE + FITTINGS ARE TO BE INSTALLED EXPOSED.
- ALL FIRE SPRINKLER SYSTEM SHALL BE SUPPORTED BY HANGERS PER NFPA 13.
- SPRINKLER SYSTEM SHALL BE MONITORED FOR FLOW, TAMPER AND TROUBLE BY AN APPROVED SIGNAL STATION SERVICE IF REQUIRED BY AHJ OR OWNER.
- CONTRACTOR SHALL FIELD VERIFY ALL LOCATION AND PIPE DIMENSIONS.
- IT IS THE RESPONSIBILITY OF THE OWNER TO MAINTAIN THE INTEGRITY OF THE FIRE SPRINKLER SYSTEM AFTER CONSTRUCTION HAS BEEN COMPLETED.



NEW FLOOR
CONTROLS RISER 2-1/2"
(2ND FLOOR)
DETAIL-B



NEW FLOOR
CONTROLS RISER 2-1/2"
(1ST FLOOR)
DETAIL-A



KEY PLAN
N.T.S

Job Site



VICINITY
N.T.S

SYM	CNT	POSITION	FINISH	TEMP	TYPE	K	NPT	SIN	WFG.	MODEL#
15	15	PENDENT	CHROME	155	QR	4.9	1/2"	VK468	VIKING	FREEDOM
33	33	PENDENT	CHROME	155	QR	4.9	1/2"	VK468	VIKING	FREEDOM
113	113	UPRIGHT	BRASS	175	QR	4.9	1/2"	VK467	VIKING	FREEDOM
17	17	UPR-SPRIGS	BRASS	175	QR	4.9	1/2"	VK467	VIKING	FREEDOM
442	442	SIDEW.	WHT/WHT	155	QR	4.2	1/2"	VK484	VIKING	FREEDOM
57	57	SIDEW.	WHT/WHT	175	QR	4.2	1/2"	VK484	VIKING	FREEDOM

TOTAL: 677

REVISIONS

NUM. DATE BY DESCRIPTION



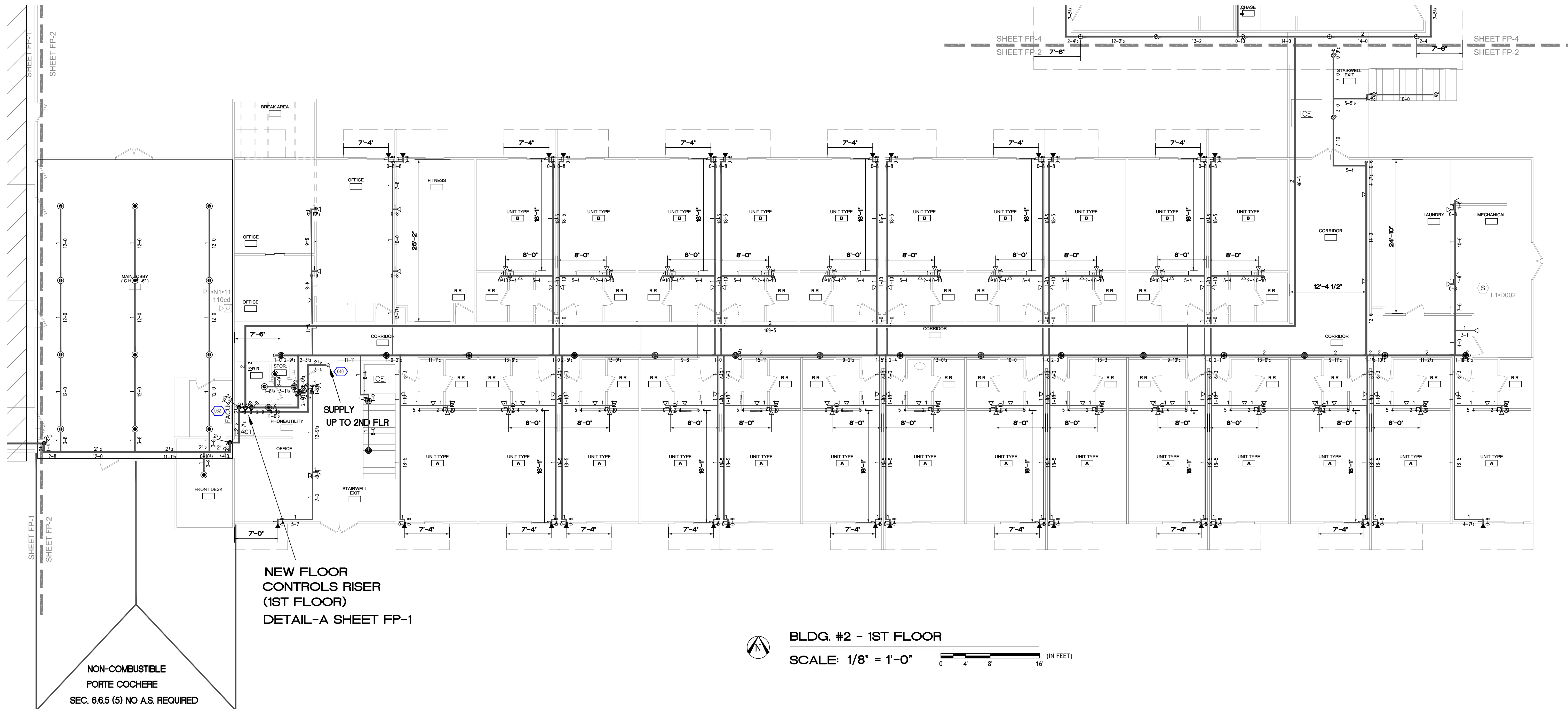
METRO
FIRE + SECURITY
63 S. HAMILTON PL. GILBERT, ARIZONA
TEL: 480-464-0609 R.O.C-C-1611-021

PROJECT:
COMMUNITY BRIDGES-RIO FRESCO
2425 S. 24TH ST.
PHOENIX, AZ.
JOB # ST0000841 COMMUNITY BRIDGES
SHEET DESCRIPTION:
FIRE SPRINKLER TENANT IMPROVEMENT
PIPING PLAN

DRAWN BY: J.DAVILA
SCALE: AS NOTED
DATE: 8-16-24
SHEET:

FP-1 OF 5

AHJ SUBMITTAL



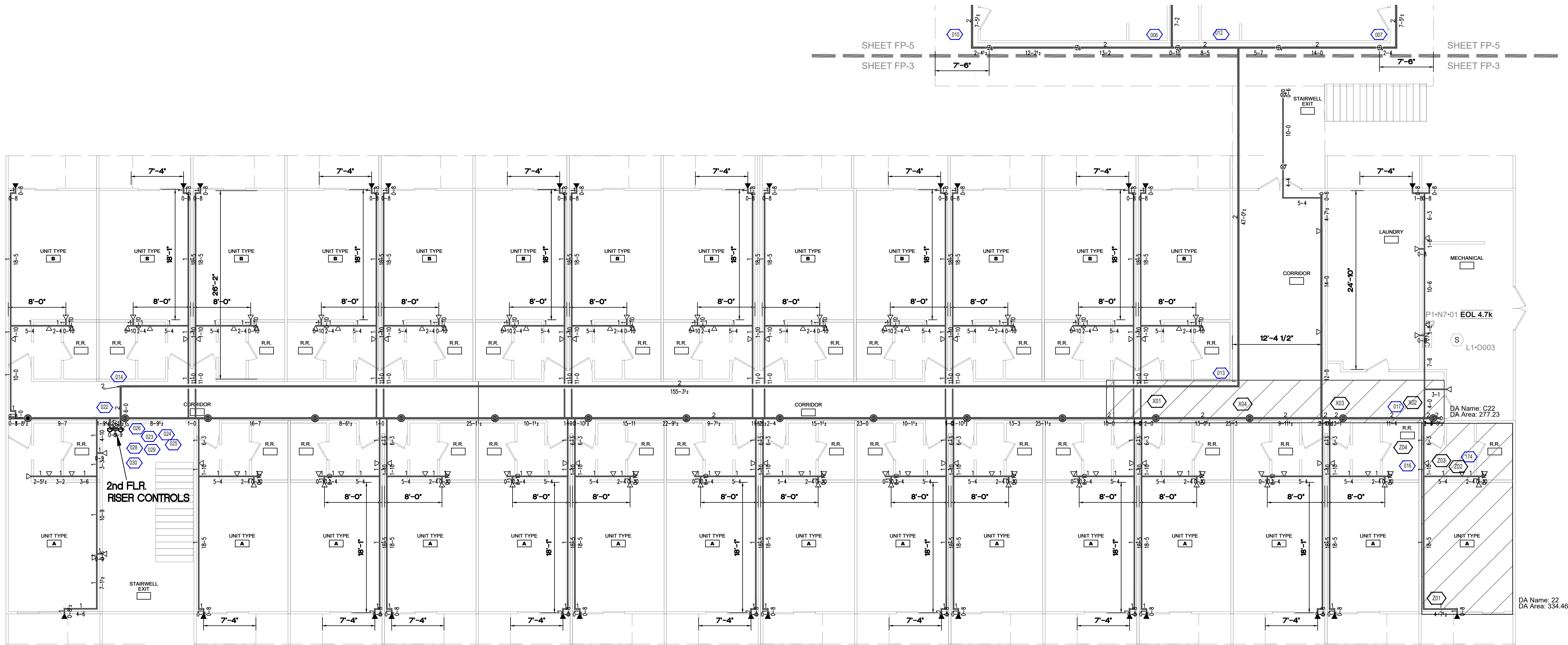
SYM.	CNT	POSITION	FINISH	TEMP	TYPE	K	NPT	SIN	MFG.	MODEL#
●	15	PENDANT	CHROME	155	QR	4.9	1/2"	VK468	VIKING	FREEDOM
●	33	PENDANT	CHROME	155	QR	4.9	1/2"	VK468	VIKING	FREEDOM
●	113	UPRIGHT	BRASS	175	QR	4.9	1/2"	VK467	VIKING	FREEDOM
◊	17	UPR-SPRIGS	BRASS	175	QR	4.9	1/2"	VK467	VIKING	FREEDOM
◊	442	SEW.	WHT/WHT	155	QR	4.2	1/2"	VK484	VIKING	FREEDOM
◄	57	SEW.	WHT/WHT	175	QR	4.2	1/2"	VK484	VIKING	FREEDOM

[illegible]

METRO[®]

METRO FIRE + SECURITY
63 S. HAMILTON PI. GILBERT, ARIZONA
TEL. 480-464-0509 R.O.C.-16111-021

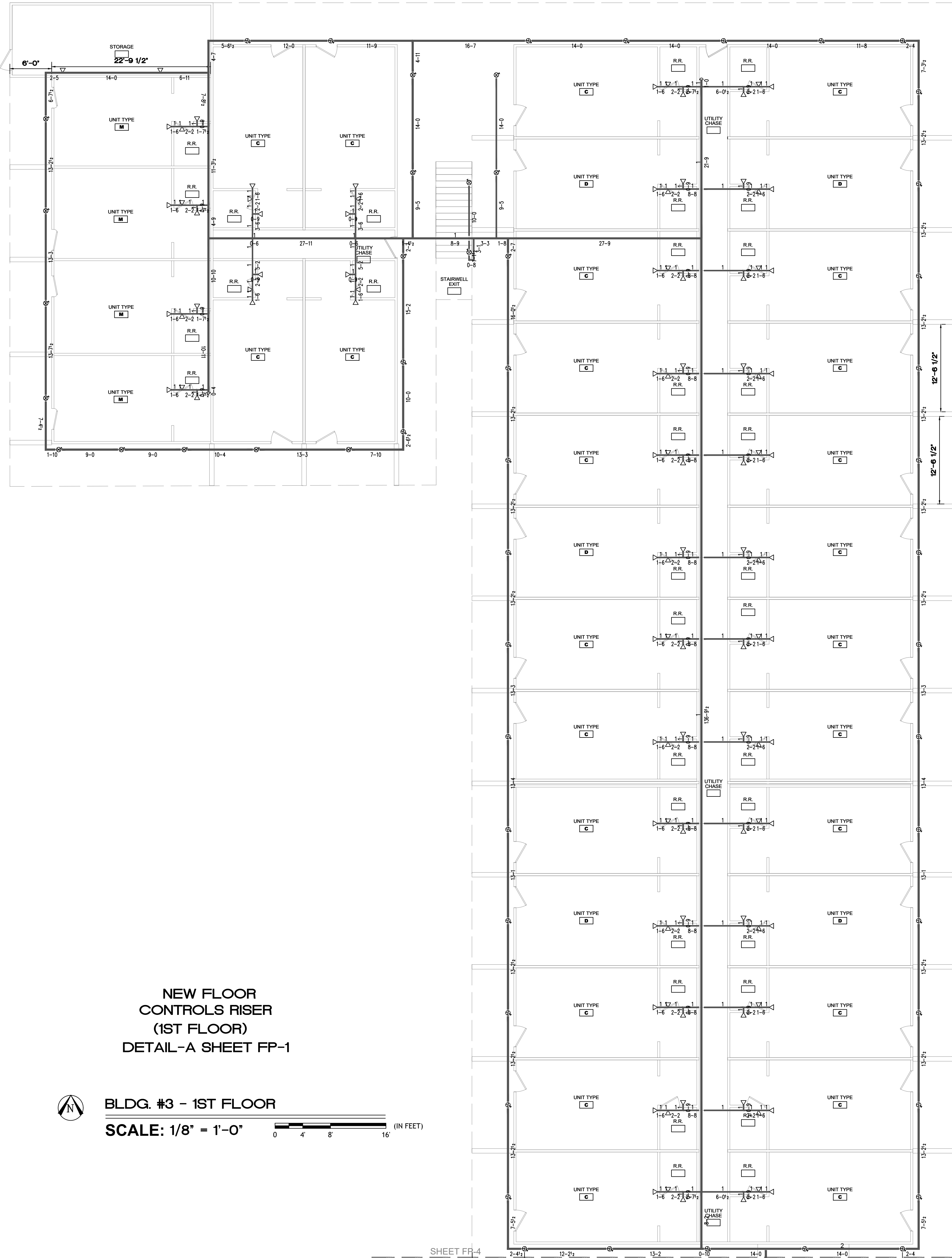
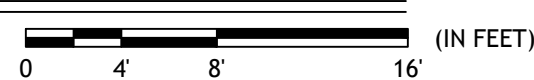
PROJECT:		COMMUNITY BRIDGES-RIO FRESCO	
DRAWN BY:		J. DAVILA	
SCALE:		AS NOTED	
DATE:		8-16-24	
SHEET:		FP-2 OF 5	
JOB #		ST05000841 - COMMUNITY BRIDGES	
LOCATION		2425 24TH ST. PHOENIX, AZ	
SHEET DESCRIPTION:		FIRE SPRINKLER SVST. BLDG 2 1ST FLR. PIPING PLAN	





BLDG. #4 - 1ST FLOOR

SCALE: 1/8" = 1'-0"



BLDG. #3 - 1ST FLOOR

SCALE: 1/8" = 1'-0"



NEW FLOOR
CONTROLS RISER
(1ST FLOOR)
DETAIL-A SHEET FP-1

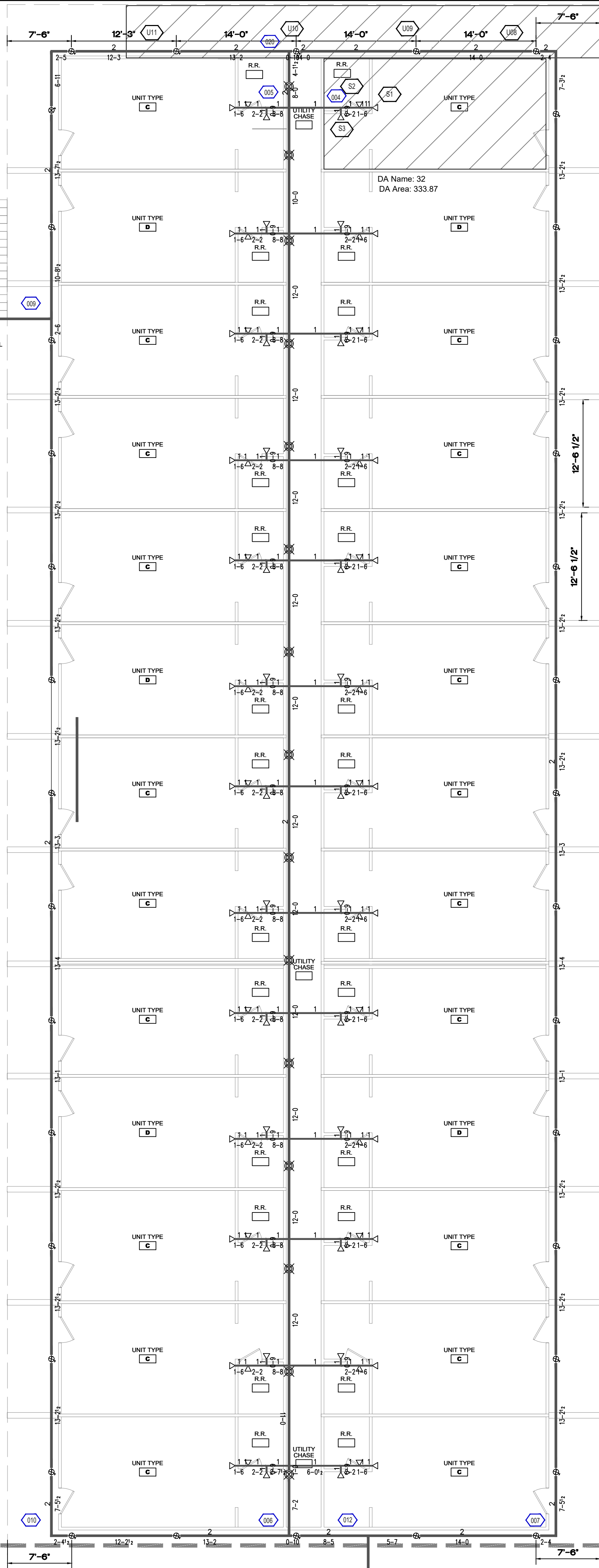
COMMUNITY BRIDGES-RIO FRESCO										METRO FIRE + SECURITY									
2425 24TH ST. PHOENIX, AZ										63 S. HAMILTON PI. GILBERT, ARIZONA									
JOB # ST02050841-COMMUNITY BRIDGES										TEL. 480-464-0509 R.O.C-C-16111-021									
SHEET DESCRIPTION:										FIRE SPRINKLER SYSTEM BLDGS. 3+4									
1ST FLR. PIPING PLAN																			
DRAWN BY: J.DAVILA																			
SCALE: AS NOTED																			
DATE: 8-16-24																			
SHEET: FP-4										OF 5									
REVISIONS										TOTAL: 677									
SYM										CNT									
POSITION										FINISH									
TEMP										TYPE									
K										NPT									
SN										MFG.									
VK468										VKING									
VK468										VKING									
VK468										VKING									
VK467										VKING									
VK467										VKING									
VK467										VKING									
VK467										VKING									
VK467										VKING									
VK467										VKING									
VK467										VKING									
VK467										VKING									
VK467										VKING									
VK467										VKING									
VK467										VKING									
VK467										VKING									
VK467										VKING									
VK467										VKING									
VK467										VKING									
VK467										VKING									
VK467										VKING									
VK467										VKING									
VK467										VKING									
VK467										VKING									
VK467										VKING									
VK467										VKING									
VK467										VKING									
VK467										VKING									
VK467										VKING									
VK467										VKING									
VK467										VKING									
VK467										VKING									
VK467										VKING									
VK467										VKING									
VK467										VKING									
VK467										VKING									
VK467										VKING									
VK467										VKING									
VK467										VKING									
VK467										VKING									
VK467										VKING									
VK467										VKING									
VK467										VKING									
VK467										VKING									
VK467										VKING									
VK467										VKING									
VK467										VKING									
VK467										VKING									
VK467										VKING									
VK467										VKING									
VK467										VKING									
VK467										VKING									
VK467										VKING									
VK467										VKING									
VK467										VKING									
VK467										VKING									
VK467										VKING									
VK467										VKING									
VK467										VKING									
VK467										VKING									
VK467										VKING									
VK467										VKING									
VK467										VKING									
VK467										VKING									
VK467										VKING									
VK467										VKING									
VK467										VKING									
VK467										VKING									
VK467										VKING									
VK467										VKING									
VK467										VKING									
VK467										VKING									
VK467										VKING									
VK467										VKING									
VK467										VKING									
VK467										VKING									
VK467										VKING									
VK467										VKING									
VK467										VKING									
VK467										VKING									
VK467										VKING									
VK467										VKING									
VK467										VKING									
VK467										VKING									
VK467										VKING									
VK467										VKING									
VK467										VKING									
VK467										VKING									
VK467										VKING									
VK467										VKING									
VK467										VKING									
VK467										VKING									
VK467										VKING									
VK467										VKING									
VK467										VKING									
VK467										VKING									
VK467										VKING									
VK467										VKING									
VK467										VKING									
VK467										VKING									
VK467										VKING									
VK467										VKING									
VK467										VKING									
VK467										VKING									
VK467										VKING									
VK467										VKING									
VK467										VKING									
VK467										VKING									
VK467										VKING									
VK467										VKING									
VK467										VKING									
VK467										VKING									
VK467										VKING									
VK467										VKING									
VK467										VKING									
VK467										VKING									
VK467										VKING									
VK467										VKING									
VK467										VKING									
VK467										VKING									
VK467										VKING									
VK467										VKING									
VK467										VKING									
VK467										VKING									
VK467										VKING									
VK467										VKING									
VK467										VKING									
VK467										VKING									
VK467										VKING									
VK467										VKING									
VK467										VKING									
VK467										VKING									
VK467										VKING									
VK467										VKING									
VK467										VKING									
VK467										VKING									
VK467										VKING									
VK467										VKING									
VK467										VKING									
VK467										VKING									
VK467										VKING									
VK467										VKING									
VK467										VKING									
VK467										VKING									
VK467										VKING									
VK467										VKING									
VK467										VKING									
VK467										VKING									
VK467										VKING									
VK467										VKING									
VK467										VKING									
VK467										VKING									
VK467										VKING									
VK467										VKING									
VK467										VKING									
VK467										VKING									
VK467										VKING									
VK467										VKING									
VK467										VKING									
VK467										VKING									
VK467										VKING									
VK467										VKING									
VK467										VKING									
VK467										VKING									
VK467										VKING									
VK467										VKING									
VK467										VKING									
VK467										VKING									
VK467										VKING									
VK467										VKING									
VK467										VKING									
VK467										VKING									
VK467										VKING									
VK467										VKING									
VK467										VKING									
VK467										VKING									
VK467										VKING									
VK467										VKING									
VK467										VKING									
VK467										VKING									
VK467										VKING									
VK467										VKING									
VK467																			

SCALE: $1/8" = 1'-0"$

Calculation results for Design Area 42		- BLDG-4 2ND FLR	
This system as shown on		company print no	dated 8-16-24
for COMMUNITY BRIDGES- RIO FRESCO HOTEL at 2425 S.24TH ST			
contract no _____ is designed to discharge at a rate of 0.05 gpm/ft ² (L/min/m ²) of floor area over a maximum area of 285 sq ft when supplied with water at a rate of 38.5 gpm at 30.3 psi at the base of the riser. Hose stream allowance of _____ is included in the above.			
Occupancy classification: Residential		Number of heads flowing: 3	
Commodity classification: _____		System Type: Wet	
Maximum storage height: _____		Maximum velocity: 13.5 ft/s	
Storage arrangement: _____			
Flow from In-Rack sprinklers: 0 gpm	Pressure Required at Source: 30.3 psi		
Flow from Overhead sprinklers: 38.5 gpm	Pressure Available at Source: 59.9 psi		
Flow from Inside Hoses: 0 gpm	Surplus Pressure at Source: 29.7 psi		
Flow from Outside Hoses: 0 gpm			
Other fixed flows: 0 gpm			
Total flow in system piping: 38.5 gpm			
Additional flow at beyond source: 100 gpm			
Total of all flows: 138.5 gpm			

Calculation results for Design Area C42		- B4 2-Corr	
This system as shown on _____		company print no _____	dated 8-16-24
for COMMUNITY BRIDGES- RIO FRESCO HOTEL at 2425 S.24TH ST			
contract no _____		is designed to discharge at a rate of 0.05 _____	gpm/ft ² (L/min/m ²) of floor area over a maximum area of 360 ft ² _____
_____		when supplied with water at a rate of 52.5 gpm _____	at 30 psi _____ at the base of the riser.
Hose stream allowance of _____ is included in the above.			
Occupancy classification: Residential _____	_____	Number of heads flowing: 4 _____	_____
Commodity classification: _____	_____	System Type: _____	Wet _____
Maximum storage height: _____	_____	Maximum velocity: _____	4.42 ft/s _____
Storage arrangement: _____			
Flow from In-Rack sprinklers: _____	0 gpm _____	Pressure Required at Source: _____	30 psi _____
Flow from Overhead sprinklers: _____	52.5 gpm _____	Pressure Available at Source: _____	59.9 psi _____
Flow from Inside Hoses: _____	0 gpm _____	Surplus Pressure at Source: _____	29.9 psi _____
Flow from Outside Hoses: _____	0 gpm _____	_____	_____
Other fixed flows: _____	0 gpm _____	_____	_____
Total flow in system piping: _____	52.5 gpm _____	_____	_____
Additional flow at/beyond source: _____	100 gpm _____	_____	_____
Total of all flows: _____	152.5 gpm _____	_____	_____

SCALE: $1/8" = 1'-0"$



Calculation results for Design Area C32		- B3 2-Corr	
This system as shown on _____		company print no _____ dated 8-16-24	
for COMMUNITY BRIDGES- RIO RESCUE HOTEL		at 2425 S.24TH ST	
contract no _____		is designed to discharge at a rate of 0.05 gpm/ft ² (L/min/m ²) of floor area over a maximum area of 380 ft ² when supplied with water at a rate of 52.5 gpm at 28.3 psi at the base of the riser.	
Hose stream allowance of _____ is included in the above.			
Occupancy classification: Residential		Number of heads flowing: 4	
Commodity classification: _____		System Type: Wet	
Maximum storage height: _____		Maximum velocity: 4.42 ft/s	
Storage arrangement: _____			
Flow from In-Rack sprinklers:	0 gpm	Pressure Required at Source:	28.3 psi
Flow from Overhead sprinklers:	52.5 gpm	Pressure Available at Source:	59.9 psi
Flow from Inside Hoses:	0 gpm	Surplus Pressure at Source:	31.6 psi
Flow from Outside Hoses:	0 gpm		
Other fixed flows:	0 gpm		
Total flow in system piping:	52.5 gpm		
Additional flow at above source:	100 gpm		
Total of all flows:	152.5 gpm		

Calculation results for Design Area 32		- BLDG-3 2ND FLR	
This system as shown on _____		company print no _____	dated 8-16-24
for COMMUNITY BRIDGES: RIO RESCUE HOTEL		at 2425 S.24TH ST	
contract no _____ is designed to discharge at a rate of 0.05 gpm/ft ² (L/min/m ²) of floor area over a maximum area of 334 ft ² when supplied with water at a rate of 38.5 gpm at 30.5 psi at the base of the riser.			
Fire stream allowance of _____ is included in the above.			
Occupancy classification: Residential		Number of heads flowing: 3	
Commodity classification: _____		System Type: Wet	
Maximum storage height: _____		Maximum velocity: 13.5 ft/s	
Storage arrangement: _____			
Flow from In-Rack sprinklers:	0 gpm	Pressure Required at Source:	30.5 psi
Flow from Overhead sprinklers:	38.5 gpm	Pressure Available at Source:	59.9 psi
Flow from Inside Hoses:	0 gpm	Surplus Pressure at Source:	29.4 psi
Flow from Outside Hoses:	0 gpm		
Other fixed flows:	0 gpm		
Total flow in system piping:	38.5 gpm		
Additional flow at/beyond source:	100 gpm		
Total of all flows:	138.5 gpm		

[illegible]

	METRO FIRE + SECURITY 63 S. HAMILTON PL. GILBERT, ARIZONA TEL. 480-464-0509 R.O.C.-C-16111-021
COMMUNITY BRIDGES-RIO FRESNO	FIRE SPRINKLER SYSTEM BLDGS. 3+4 2ND FLR. PIPING PLAN
PROJECT: 2425 24TH ST. PHOENIX, AZ.	JOB #: JTD000084-COMMUNITY BRIDGES SHEET DESCRIPTION
DRAWN BY: SCALE: DATE: SHEET:	J.DAVILA AS NOTED 8-16-24 FP-5 OF 5